

# K2 POWER ES 165 KX3

Midrange 3"

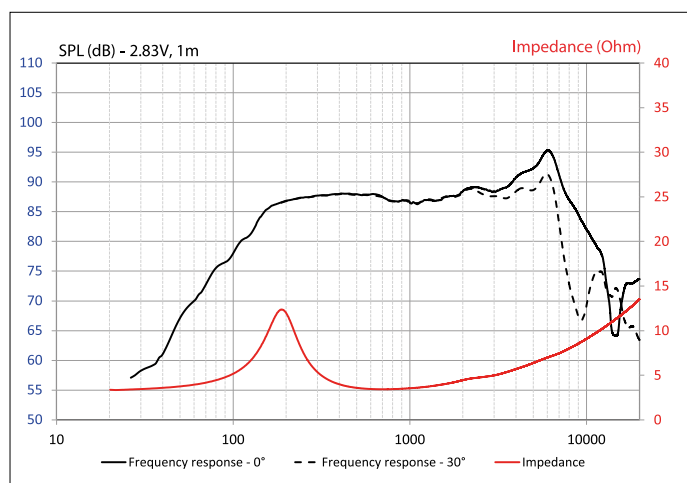


- K2 Power sandwich cone
- "TMD" surround (patented technology)
- Aluminum basket

## SPECIFICATIONS

Nominal power	50W
Maximum power	100W
Sensitivity (2,83V/1m)	88dB
Cone	Kevlar sandwich
Nom. impedance	4Ω
Surround	Butyl
DC resistance	3.2Ω
VC diameter	20mm 0.2532"
Former	Kapton
Layers	2
Wire	CCWA
Net weight	185g 0.40lbs

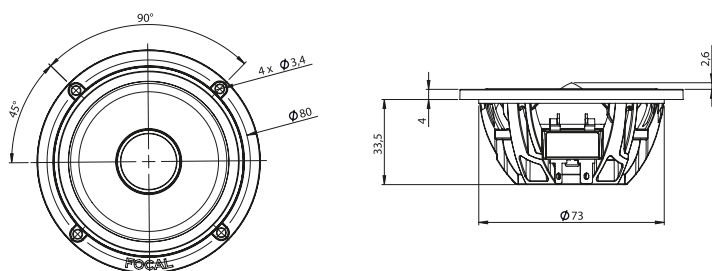
## FREQUENCY RESPONSE/IMPEDANCE



## PARAMETERS

Rdc	3.2 Ω
Fs	190Hz
Mms	3g
Cms	0.2mm/N
Vas	0.3l
Qts	0.69
Qes	0.92
Qms	2.6
Bxl	3.7 N/A
Sd	35cm <sup>2</sup>
SPL	86dB
Xmax	2.3mm

## MECHANICAL DRAWING



Elite

"HAUTE COUTURE" SOUND



FOCAL®

THE SPIRIT OF SOUND